



glownexus

## Identity centric, cost-effective solutions

Step up your identity securely and efficiently

## Enabling IT for that competitive edge...

The world of work is undergoing a radical change. Work has become real-time, interconnected, as we deal with a relentless stream of information to leverage business activities with suppliers, customers, partners, and employees. In fact, the modern business scenario has changed, with digital technology becoming an indispensable asset to organizations.

This has resulted in more direct business, greater utilization of the cloud, more mobile access, and devices linked via IoT.

## The fallout of going all out Digital Technology...

Organizations today capitalize on digital technology to succeed in new areas and become more performant. Organizations go regional or global and create remote work environments in a cloud-based infrastructure for their employees and their eco-system. This digital and connected world brings new and larger risks and the need to protect highly confidential and business essential information. Cybercrime today is the greatest threat to every company in the world. It is predicted that damages cost up a whopping USD 6 trillion annually by 2021.

## Risks can come in various sizes and shapes

Cyberattacks are a very serious risk, and more and more organizations, big and small, are victims of phishing, ransomware, hacking, and other types of cyber-attacks. While inside or outside attacks can result from slip-ups by careless and insufficiently trained employees, cyberattacks can also be perpetrated by criminals or state actors from any location in the world.



# Effects on Businesses

A successful cyber-attack can result in extensive damage to your business. While it can certainly dent your bottom line, it can also affect your credibility and trust within the market.



# The need for Identity Management

Almost every successful cyber-attack relies on a stolen or compromised identity. Identity management provides the solution for validating individuals accessing systems, applications, or networks, improving efficiency and reducing the risk of unauthorized access to systems and data. The goal is to ensure that the right people, applications and connected devices both within and outside the organization get access to the right information at the right time, for the right reason, in an efficient, controllable and easy-to-use manner.



## The Glownexus advantage

Glownexus is well qualified to help your company to step up in identity security and efficiency by leveraging technology as a tool to implement identity centric, cost-effective IAM solutions that support industry-wide standards and enable you to meet current, upcoming and evolving business. We advise and implement solutions allowing to streamline the identities & accesses of employees, partners, and customers in an effective manner, enabling secure integration with the rest of the ecosystem being on-premise or in the cloud. Glownexus' EU digital solution center has a strong base of experienced certified resources using proven methodologies and tools to accelerate delivery and increase quality. Glownexus can boast of several strengths that deliver top-of-the-line identity solutions:

- Specialized, vendor independent business consultant for Identity Management
- Strong system integration skills critical for successful Identity Management Implementations
- Always finds the optimum access solution in the world of Identity Management as well as IoT
- Ability to implement role concepts (IAM and PAM) directly into the chosen product
- Sound experience with Cloud and On-premise implementations

## The Zero-Trust principle as a security solution

The pressure to safeguard enterprise systems and data and protect customers is a very common issue in today's world where access to systems is distributed, and hacking and ransomware are daily headline news.

Glownexus promotes the Zero Trust Framework "don't trust, always verify".

Glownexus favors a strict approach to cybersecurity in which every individual or device that attempts to access a private network, located inside or outside of that network, must be identified and authorized. Organizations should "assume" their internal network has already been compromised and implement strategies or technologies to minimize further risk.

Such strategies and technologies include:

Segregation of Duties	Least privileged access	Microsegmentation	Multifactor authentication
Not one individual or device should have full access to all of an organization's critical IT sources.	Giving each user least privileged access, meaning that every user or device within the network can access only the most essential resources they need, and nothing else.	Splitting up the corporate IT environment into security zones and requiring separate authorization in order to access each of those zones.	Requires more than one method of authentication to verify user credentials.

A number of technology solutions have been created to address aspects of the Zero Trust framework, including but not limited to:

- Identity and access management (IAM)
- Single Sign-on and Multi Factor authentication
- Privileged access management (PAM)
- Encryption software

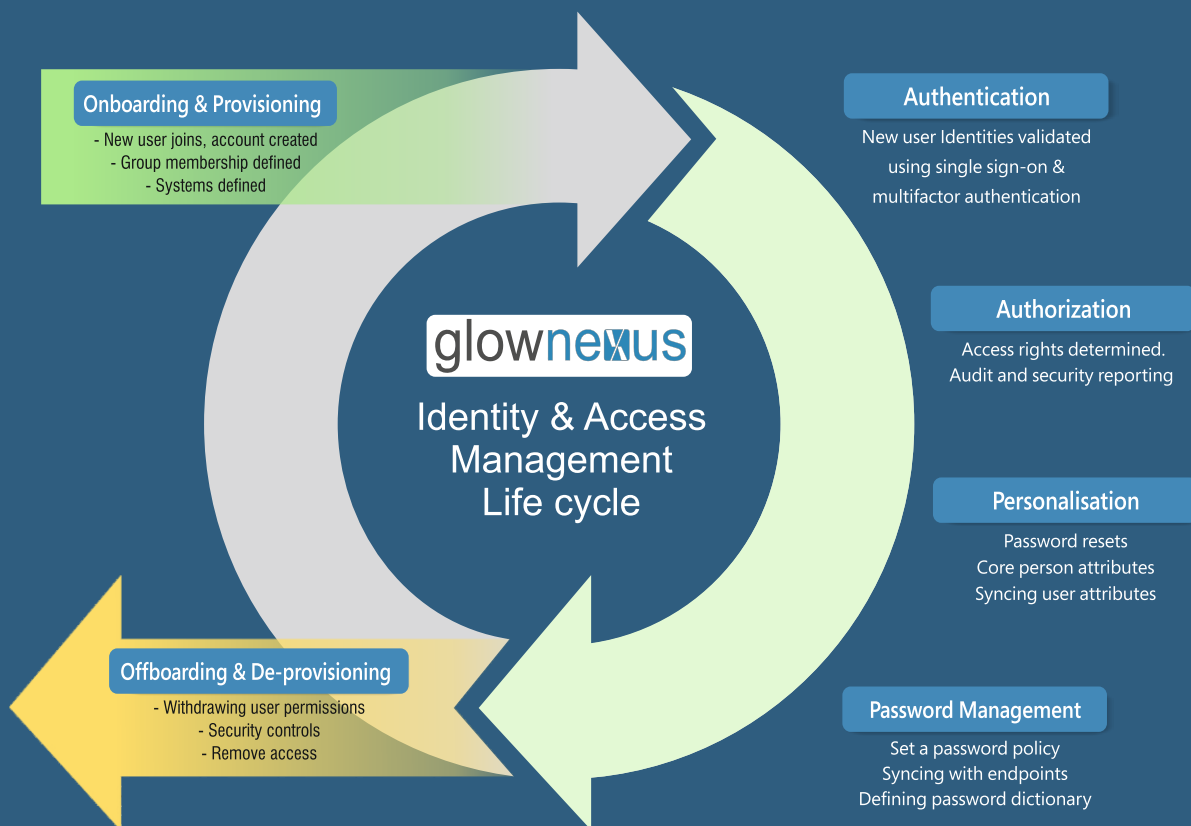
Glownexus provides advisory and implementation services in IAM, device and data protection and has strong technology partnerships with One Identity, Saviynt, Ping Identity, Armis, Microsoft Azure IDAAS and SAP Customer Data Cloud.

We enable our clients to streamline and automate their business processes and implement the technologies for accessing systems and devices.

## Achieve full visibility of digital identities through effective IAM solutions

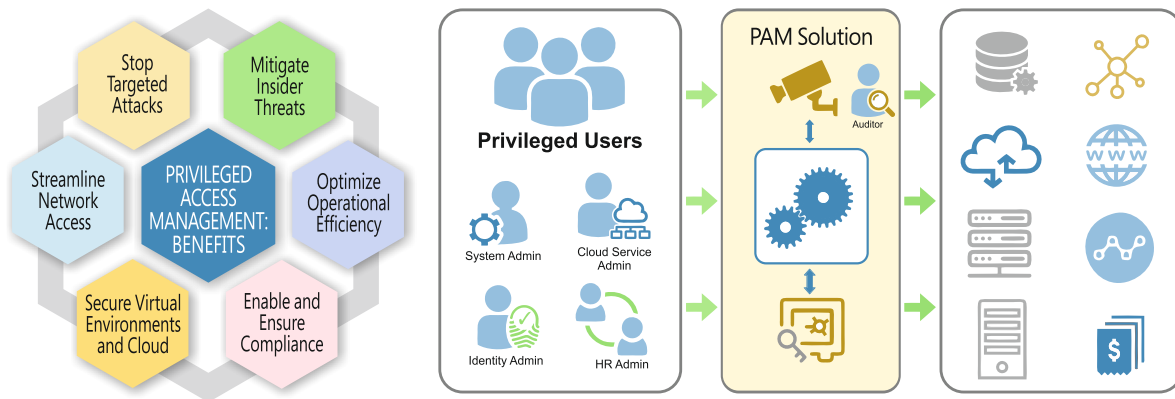
Identity and access management (IAM) solutions ensure that only authenticated users have the necessary access to systems, applications, and data. IAM's strong authentication protocol relies on the principle of one digital identity per user, and constantly maintains, monitors, and modifies these digital identities throughout the access lifecycle.

Glownexus' best business philosophy combined with deep experience and technical expertise makes us unique in IAM. We cover the full range of solutions for Identity Governance and Access (IGA), Identity as a service (IDaaS), Customer Identity and Access Management (CIAM), Privileged Access Management (PAM) and Data Access Governance (DAG).



## Specialized, robust Privileged Access Management (PAM) Solutions from Glownexus

A PAM solution, that secures access to critical enterprise assets, forms an essential part of any IAM system. Breach of powerful and highly sensitive accounts can be especially damaging since they grant access to administrative capabilities such as network and server settings. PAM solutions fall into three categories namely access control, session management and password management. They enable to lock down all privileged accounts instantly and automatically, thereby adhering to the “Zero Trust” principle promoted by Glownexus.



## PAM Lifecycle Management

Glownexus' dedicated PAM team first conducts a data and system protection impact assessment. This will help in determining the access to information which is critical to your business. Next step is to audit and assess as to who can have access to privileged accounts, and at what levels. Thereafter a PAM lifecycle management architecture is created, and a solution is implemented to ensure the PAM process is auditable.



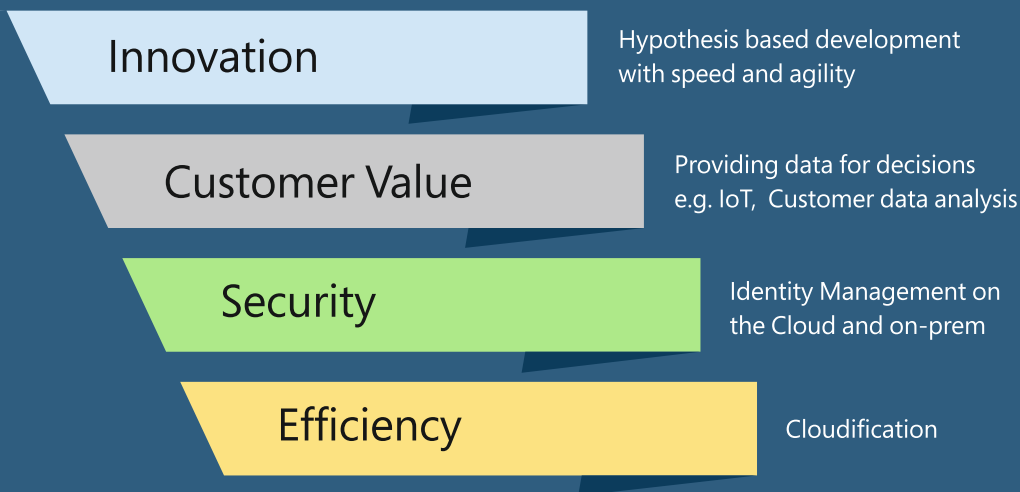
### Glownexus' PAM solution aims at:

- Protecting confidential info by giving temporary access only for necessary content.
- Action instead of reaction. Detect misuse automatically.
- Tracking and securing every privileged account.
- Employing Least Privileged Access.
- Recording and auditing privileged activity.
- Same levels of security regardless of platform.

# Glownexus at a glance

Glownexus is a Switzerland based, specialized technology solutions as well as services company, with affiliates in the Netherlands, the UK, and a digital solution center in the EU (Hungary) and an extensive network of technology and delivery partners.

At Glownexus we are committed to help clients to integrate product solutions, to customize and to accelerate business decisions by turning data into AI driven insights to "Make the right decision in real time, every time".



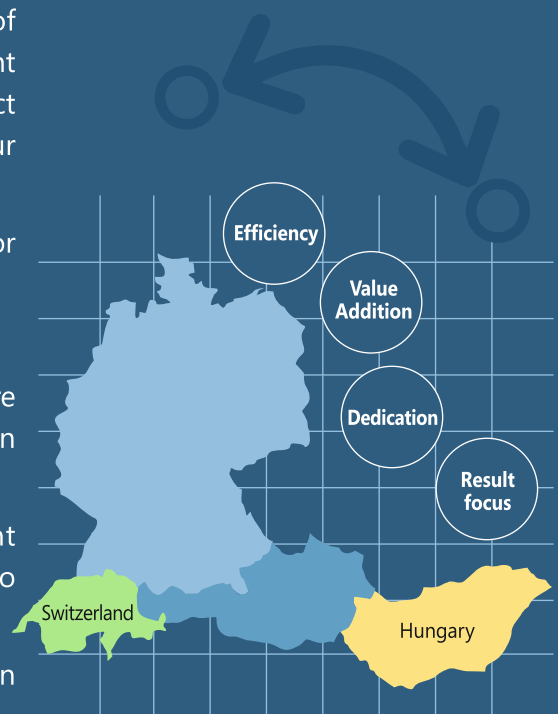
## The Glownexus RightShore advantage

Nearshore outsourcing creates a series of advantages when working with a dedicated development team from a nearby location in Budapest under the strict EU Data Protection rules, and lets you monitor your software projects remotely next door.

Glownexus' Rightshore model works in a prime contractor relationship model.

### Advantages

- Clear roles and responsibilities between Client, Onshore and Nearshore teams, ensuring an ideal orchestration on each phase of a project
- Mapping roles to people taking into account engagement size and enabling scalability from small to large projects
- Distribution of responsibilities are pre-defined and can be adapted to fit the client's delivery organization.



To learn more about Glownexus solutions and services please feel free to contact Vijay Srinivasan, Partner.

[vijay.srinivasan@glownexus.com](mailto:vijay.srinivasan@glownexus.com)

+41 79 250 71 56

OR

Bruno Buggiani PhD

[bruno.buggiani@glownexus.com](mailto:bruno.buggiani@glownexus.com)

+41 76 365 13 05



#### Digital Technology Solutions and Services

Glownexus SA  
Rue de l'Eglise 22, 1926 Fully - Switzerland  
[info@glownexus.com](mailto:info@glownexus.com)  
+41 79 308 99 88

Glownexus Nederland BV  
Wilsonsplein 15, 2011 VG Haarlem - Netherlands

Glownexus Ltd  
Newmarket Road, Heydon, Royston, SG8 7PN - UK

#### Digital Solution Centre

Glownexus Hungary Kft  
1072, Budapest, Rákóczi út 42. 5. em. - Hungary  
[info@glownexus.com](mailto:info@glownexus.com)  
+36 1 787 9057